

# CHILD CARE COURIER



March 2019 Edition

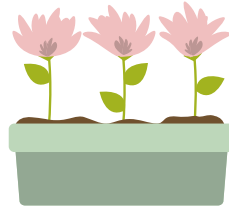


## MARCH DEVOTION

It may be March, but we seem to still be in the dead of winter. We are all ready to be done, aren't we? Here's a small glimpse of the season right around the corner:

"The year's at the spring,  
 And day's at the morn;  
 Morning's at seven;  
 The hill-side's dew-pearled;  
 The lark's on the wing;  
 The snail's on the thorn;  
 God's in his Heaven—  
 All's right with the world!"

- Robert Browning



What a wonderful picture of newness and vitality! All really is right with the world! But that stems from the fact that Jesus had made you and me new. The apostle Peter states it this way, "Praise be to the God and Father of our Lord Jesus Christ! In his great mercy he has given us new birth into a living hope through the resurrection of Jesus Christ from the dead." (1Peter 1:3) Spring is coming! Easter is almost here! There is hope!

In Christ,  
 Mr. Kevin Walker

## NEW ENTRY CODE

There is a new entry code for Child Care and Preschool, effective Monday, April 1st. Please remember that this is for adult use only, not for children that love pushing buttons.

## 3K/4K REGISTRATION

Our preschool program for next school year is almost full! The morning 3K and 4K sessions are full, but Tues. and Thurs. sessions (afternoons) are available for 3 yr-olds. Monday, Wednesday, and Friday sessions (afternoons) or five afternoons a week are available for 4 yr-olds. Applications can be found on the Bethlehem website or requested via email. For forms or information, please contact our Child Care/Preschool (Germantown) office at (262) 257-0408 or [childcareoffice@bethlehem-wels.org](mailto:childcareoffice@bethlehem-wels.org).

## SUMMER PROGRAM



Before you know it, summer will be here and we can't wait! This year's summer program theme is "Fruit of the Spirit". The official summer program will run from June 3rd-August 22nd. Registration materials & calendars/schedules will be sent out March 25th for all of summer - Due back 4/10.

## STAFF UPDATES

The Lord has blessed Ruth Wisniewski with great healing after her hand surgery. She has been able to return to work part time, mainly doing office work. We are happy to have her back and pray the Lord continues to bless her healing. Prayers are also requested for Lizzie Rodrigues, one of our beloved child care teachers. She was diagnosed with leukemia earlier this year. We miss having her at BLCC and pray the Lord blesses her treatments.

## UPCOMING IMPORTANT DATES

- 3/25-3/29 - No Preschool or LES Day School - Child Care Is Open
- Thursday, 4/11 & Friday 4/12 - No Preschool - Parent/Teacher Conferences (LES Day School & Child Care are open)
- Saturday, 4/13 - Easter Egg hunt
- Friday, 4/19 - Good Friday - No Preschool or LES Day School - **Child Care Closed**
- Monday, 4/22 - No Preschool or LES Day School - Child Care Is Open
- Thursday, 5/23 - Last Day Preschool 3K (Mrs. Boxill & Mrs. Herriges)
- Friday, 5/24 - Last Day Preschool 4K (Mrs. Boxill & Mrs. Herriges)
- Monday, 5/27 - Memorial Day - No Preschool or LES Day School - **Child Care Is Closed**
- Wednesday, 5/29 - Last Day LES Day School - Dismissal at 11:30.
- Child Care Is Open Tuesday, 5/28-Thursday, 5/30.
- Friday, 5/31 - Staff In-Service & Summer Prep - **Child Care Is Closed**
- Thursday, 7/4 - 4th of July - **Child Care Is Closed**
- Friday, 7/5 - **Child Care is closed**
- Friday, 8/23 - Staff In-Service & School Year Prep - **Child Care Is Closed**



## CONTACT

262-257-0408  
[childcareoffice@bethlehem-wels.org](mailto:childcareoffice@bethlehem-wels.org)